



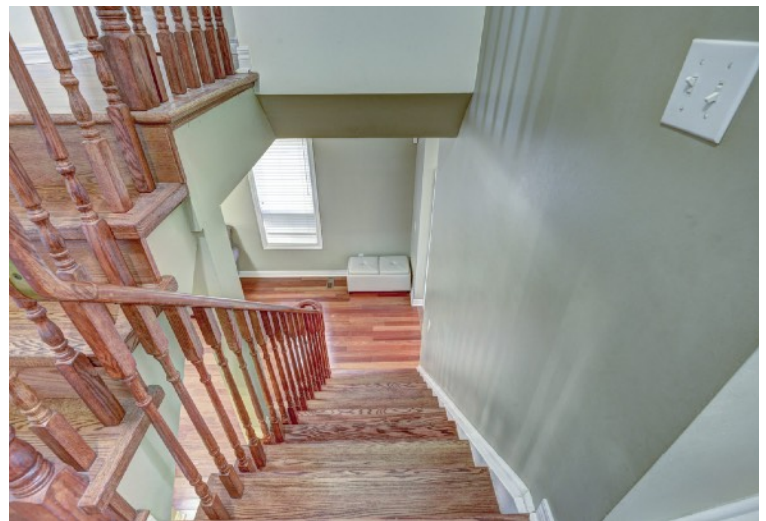
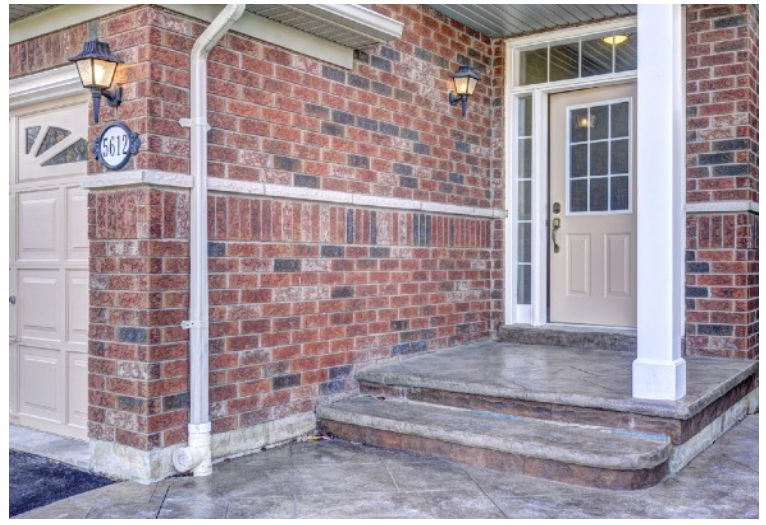
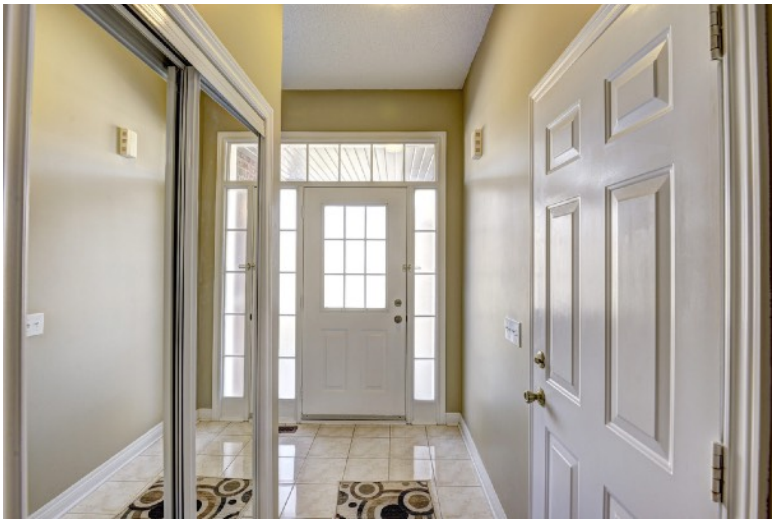
5612 Raleigh Street, Mississauga

*“Semi Detached on Premium Location
with Finished Basement”*

SHEEMA KALRA
BROKER, ABR, AMP
D: +1.416.878.1000
T: +1.855.5.SHEEMA
W: SHEEMAKALRA.COM

RE/MAX







Finished Basement • Stamped Concrete

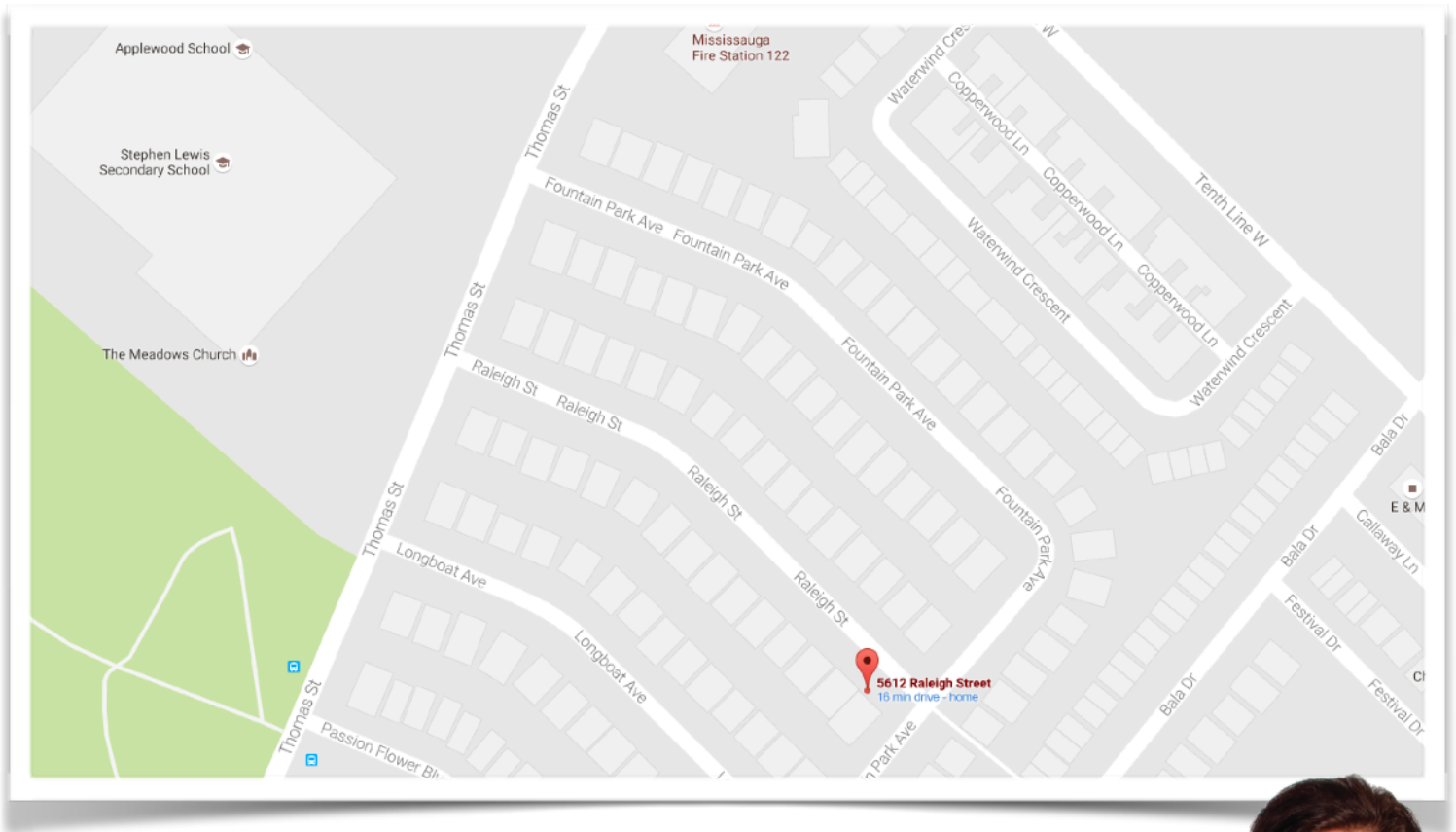


Property Overview:

Fabulous Home In Prime Location Of Churchill Meadows. This is a Bright Sun Filled Spacious Semi Detached with Open Concept Layout. This house features a Modern Functional Kitchen with Quartz Counter Top and Stainless Steel Appliances.

Large Semi Detached in Mississauga is a 4 Bedroom and 4 Bathroom, with Living, Dining and Family Room. Gleaming Hard Wood on Main Floor, Oak Stairs, Frosted glass partition in 4th Bedroom which can be used as a Grand Room. Other upgrades are Fireplace, Master With Walk-in Closet & 5Pcs Ensuite. Professionally Finished Basement has Recreational Room, 5th Bedroom, 3Pcs Bathroom And Laundry. Exterior of the house is upgraded as well. It features Stamped concrete on front and backyard and beautifully manicured garden.

New Roofing. No Side Walk, Two Car long driveway. Close to All Amenities, Prestigious schools, Shopping, & Parks.



SHEEMA KALRA

BROKER, ABR, AMP

D: +1.416.878.1000

T: +1.855.5.SHEEMA

W: SHEEMAKALRA.COM

RE/MAX

